

VUE

broadcast PTZ camera



Go pro with PTZ

Add whole new dimensions to capturing video presentations with RGBlink vue PTZ cameras.

Featuring advanced an ISP image processor and a 2 mega pixel sensor, vue cameras are available in a range models across 12X, 20X & 30X optical zoom and a range of output options from HDMI & SDI to H.264, H.265 & NDI.

Pan, Tilt, Zoom to capture all the action – get in even closer with 10X digital zoom, and the best video with auto focus, dynamic level adjustment (WDR) and 2D/3D Dynamic Noise Reduction (DNR) all at up to 60fps.

All vue models feature the unique TALLY crown light indicator, integrated right into the housing for 360-degree viewing.

The innovative and patented RGBlink vue camera design is at home in every environment.



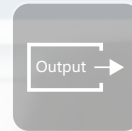
12X/20X/30X



Multi-protocol



Precision Movement



Digital & IP Video



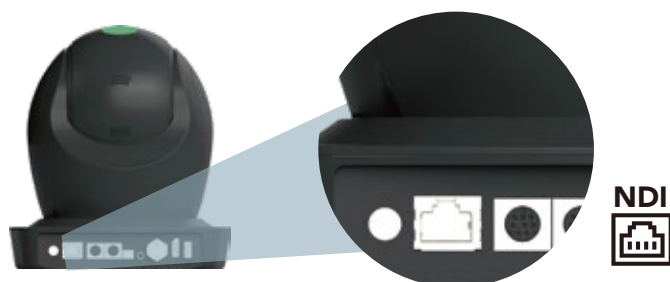
Full HD

NDI

Select vue models include NDI HX protocol and capabilities, allowing vue cameras to be integrated directly into professional and broadcast workflows including to applications such as Premier Pro, Zoom and more.

Zoom In

Choose from across three models of optical zoom – 12X, 20X or 30X, behind which the 2 mega pixel Panasonic sensor and ISP processor offering a further 10X digital zoom to get even closer.





TALLY Crown

Selected view models include the RGBlink vue TALLY Crown indicator light showing clearly stand-by and on-air status of the camera.

Multi-Protocol Support

Output to HDMI, #G-SDI, RTMP, and optionally NDI and USB/UVC for maximum connectivity, in support of virtually any application requirement.

Set Presets

Set up to 255 presets of positions to be stored on a camera and available for instance recall.

Precise Position Control

High precision micro stepper motor controls to within 0.1 degrees. Reposition the camera and zoom to any position in under 1s, smoothly, accurately and super quietly. Advanced algorithms optimise imaging at every movement for precise blur-free performance.



Remote Control

Connect to vue cameras with industry standard protocols including VISCA and ONVIF.

Power of Convenience

Power vue cameras from supplied PSU or via the ethernet port for selected models connected on PoE enabled networks.

Audio In

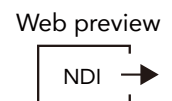
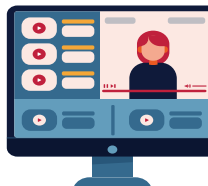
All vue models include 3.5mm mini-jack input, allowing Line level inputs to be inserted to all outgoing video signals including embedded on HDMI, SDI, NDI and other IP codecs.

PTZ Park

Unique feature allowing for a camera to be set with lens down for protection and storage – parked for movement or transport.

Browser Config & Preview

Connect directly to a vue camera from any browser without the need to install a dedicated app. The web interface allows full configuration of the camera as well as preview of video, operations and control.



Specifications

Connections

	RGB12X-POE-TLY	RGB12X-PNDI-TLY	RGB20X-USB-TLY	RGB20X-POE-TLY	RGB20X-PNDI-TLY	RGB30X-POE-TLY	RGB30X-PNDI-TLY
Video Out							
HDMI	●	●	●	●	●	●	●
BNC (SDI)	●	●		●	●	●	●
USB2-A (UVC)	●	●	●	●	●	●	●
USB3-A (UVC)			●				

Network / IP Video

RJ45	●	●	●	●	●	●	●
------	---	---	---	---	---	---	---

Audio / Line In

Mini-Jack	●	●	●	●	●	●	●
-----------	---	---	---	---	---	---	---

Control

RS232 (DIN)	●	●	●	●	●	●	●
RS485 (IDC)	●	●		●	●	●	●

Power

DC Jack	●	●	●	●	●	●	●
---------	---	---	---	---	---	---	---

Features

PoE	●	●	●	●	●	●	●
NDI		●		●		●	●
RTMP	●	●	●	●	●	●	●
RTSP	●	●	●	●	●	●	●
SRT	●	●	●	●	●	●	●

Optics

	12X	20X	30X
Zoom (f) mm	4.1~49.2	5.1~91.5	5.2~148.4
Angle(°)	6.57~70.28	3.45~60.04	2.14~58.1
AV	F 1.8~2.68	F 1.8~2.9	F 1.3~4.8
Digital Zoom	10X	10X	10X

Performance

Camera

Sensor	1/2.8 inch 2.07megapixel HD CMOS
Focus	Auto/Manual
White Balance	Auto/Manual/One Push/3000K to 7000K(selectable)
Minimum Illumination	0.5Lux
DNR	2D & 3D
Aperture	Auto/Manual
Electronic Shutter	Auto/Manual
BLC	ON/OFF
WDR	OFF/Dynamic level adjustment
Video Adjustment	Brightness/Color/Saturation/Contrast/Sharpness/B/W mode/Gamma curve
SNR	>55dB

PTZ

Pan Rotation	-170° ~ +170°
Tilt Rotation	-30° ~ +90°
Pan Control Speed	0.1 ~ 60°/second
Tilt Control Speed	0.1 ~ 30°/second
TALLY	360° TALLY light
Preset Number	255 presets (10 presets by remote control)
Preset Speed Pan	60°/second
Preset Speed Tilt	30°/second

Standards

Video Codec	H.264 H.265
Video Compression	AAC/MP3/G.711A
Output Resolutions	1080P 60/59.94/50/30/29.97/25 1080I 60/59.94/50 720P 60/59.94/50
Control Protocol	VISCA/Pelco-D/Pelco-P
Network Protocol	RTSP/RTMP/ONVIF/SRT
Remote Operation (IP)	Remote Upgrade, Reboot and Reset
Accessory	Power Supply/RS232 Control Cable/Remote Control
Optional Accessory	Bracket/Flight Case

Operational

Temperature	-10 ~ 50°C
Humidity	20 ~ 80% RH

Physical

Weight	1.7kg (3.7lb) net
Dimensions (LWH)	188x180x198mm (7.4x7.1x7.8in)

