

# SMS PRESENCE MOBILE



## Attractive from all sides.

An ergonomic and flexible product that is easy to move and easy to install. Attractive and elegant on all sides, and thus able to be placed in the centre of the room. Perfect for large, heavy displays and touch-sensitive displays, due to the very stable, patented design.

The display can be locked with the accompanying locking screw for personal safety, or with a padlock (not included) which provides increased protection from theft.

The pre-factory assembly means that installation is easy and quick.

The design of the Presence series is, furthermore, protected. Maximum display weight: 120 kg. Finish: Aluminium/anthracite grey.



## ARTICLE NUMBER

C5-31U003-2-A-0  
SMS Presence Mobile 1290

## INCLUDED PRODUCTS

### SMS Presence Floorstand Mobile

1 x C5-31U001-2-A-1

### SMS Presence Mobile Body 1290

1 x C5-31U003-2-A-2

### SMS Presence Mobile Holder

1 x C5-11U003-2-A-3

## INFO

PLACEMENT	Mobile
ROTATION	Landscape
MOBILE	Yes
LOCKABLE	Yes
VESA HORIZONTAL	200 - 800
VESA VERTICAL	100 - 400
MAX WEIGHT [KG]	120
WARRANTY [YEARS]	5

# PRODUCT VARIATIONS

C5-31U003-2-A-0 - SMS PRESENCE MOBILE 1290

---

C5-31U005-2-A-0 - SMS PRESENCE MOBILE 1650

## ACCESSORIES



### **SMS PRESENCE CAMERA SHELF**

PR100001



### **SMS PRESENCE SHELF - WALL/FLOOR**

PR100004-P0

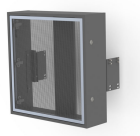
### **SMS PRESENCE SHELF - MOBILE**

PR100002-P0



### **SMS PRESENCE VESA BARS 600**

PR210201



### **SMS PRESENCE TOWER BOX - WALL/FLOOR**

C5-21U004-2-A

### **SMS PRESENCE TOWER BOX - MOBILE**

C5-21U006-2-A



### **SMS PRESENCE MEDIA BOX - GLASS**

PR400001

### **SMS PRESENCE MEDIA BOX - PERFORATED**

PR400003