



## User Manual

3x1 HDBaseT Wallplate Transmitter, 2 x HDMI & 1 x USB C Inputs

**Model PT-HDBT-703-TXWP-F**

Designed in Germany

## Preface

Read this user manual carefully before using this product. Pictures shown in this manual are for reference only. Different model layouts and specifications are subject to the physical product.

This manual is for operation instructions only, not for any maintenance usage.

In the constant effort to improve our product, we reserve the right to make changes in functions or parameters without prior notice or obligation.

## Trademarks

Product model and logo are trademarks. Any other trademarks mentioned in this manual are acknowledged as the properties of the trademark owner. No part of this publication may be copied or reproduced without the prior written consent.

## FCC Statement

This equipment generates, uses and can radiate radio frequency energy and, if not installed and used in accordance with the instructions, may cause harmful interference to radio communications. It has been tested and found to comply with the limits for a Class B digital device, pursuant to part 15 of the FCC Rules. These limits are designed to provide reasonable protection against harmful interference in a commercial installation.

Operation of this equipment in a residential area is likely to cause interference, in which case the user at their own expense will be required to take whatever measures may be necessary to correct the interference.

Any changes or modifications not expressly approved by the manufacture would void the user's authority to operate the equipment.



**REACH | 1907/2006/EU**

**ROHS | 2011/65/EU**

PureLink hereby declares that this product **PureTools PT-HDBT-703-TXWP-F** complies with Directives 1907/2006/EU und 2011/65/EU.

**EMC / LVD (Electro Magnetic Compatibility / Low Voltage Directive)**

PureLink GmbH hereby declares that this product **PureTools PT-HDBT-703-TXWP-F** complies with Directives 2014/30/EU and 2014/35/EU. The full text of the EU Declaration of Conformity is available at the following Internet address:

[http://www.purelink.de/ce/PT-HDBT-703-TXWP-F\\_CE.pdf](http://www.purelink.de/ce/PT-HDBT-703-TXWP-F_CE.pdf)



## SAFETY PRECAUTIONS

To ensure the best performance from the product, please read all instructions carefully before using the device. Save this manual for further reference.

- Unpack the equipment carefully and save the original box and packing material for possible future shipment.
  - Follow basic safety precautions to reduce the risk of fire, electrical shock and injury to persons.
  - Do not dismantle the housing or modify the module. It may result in electrical shock or burn.
  - Using supplies or parts not meeting the products' specifications may cause damage, deterioration or malfunction.
  - Refer all servicing to qualified service personnel.
  - To prevent fire or shock hazard, do not expose the unit to rain, moisture or install this product near water.
  - Do not put any heavy items on the extension cable in case of extrusion.
  - Do not remove the housing of the device as opening or removing housing may expose you to dangerous voltage or other hazards.
  - Install the device in a place with fine ventilation to avoid damage caused by overheat.
  - Keep the module away from liquids.
  - Spillage into the housing may result in fire, electrical shock, or equipment damage. If an object or liquid falls or spills on to the housing, unplug the module immediately.
  - Do not twist or pull by force ends of the optical cable. It can cause malfunction.
  - Do not use liquid or aerosol cleaners to clean this unit. Always unplug the power to the device before cleaning.
  - Unplug the power cord when left unused for a long period of time.
  - Information on disposal for scrapped devices: do not burn or mix with general household waste, please treat them as normal electrical wastes.
-

## Contents

1. Product Introduction .....	1
1.1 Features .....	1
1.2 Package List .....	2
2. Specification.....	3
3. Panel Description .....	4
3.1 Front Panel .....	4
3.2 Rear Panel.....	5
3.3 Side Panel.....	6
4. System Connection .....	7
5. Button Control.....	8
5.1 Source Switching.....	8
5.2 Display Control .....	9
6. RS232 Control .....	9
6.1 RS232 Connection.....	9
6.2 RS232 Control Software .....	10
6.3 RS232 Command .....	15
6.3.1 Device Control.....	15
6.3.2 Source Switching .....	15
6.3.3 EDID Management .....	16
6.3.4 CEC Control .....	17
7. Button User-defined.....	18
8. Panel Drawing .....	20
9. Troubleshooting & Maintenance .....	21
10. After-Sales Service .....	22

## 1. Product Introduction

Thanks for choosing the PT-HDBT-703-TXWP-F 3x1 Wallplate Transmitter Switcher, which is designed to switch and extend HDMI or Slimport input signal to far-end display device, and the transmission distance is up to 131ft/40m at 4K and 229ft/70m at 1080P video by using a single CATx cable.

The switcher features two HDMI and one Type-C USB inputs, it can be selected by the **SOURCE AUTO** button on the front panel. The switcher supports CEC. The **DISPLAY ON/OFF** button on front panel is used to control the far-end display device, and it can be programmed by IR learning or RS232 command to ensure the compatibility with various display devices. Moreover, 12V-48V PoC allows the switcher can be powered from the compatible HDBaseT receiver.

### 1.1 Features

- Supports HDMI signal up to 4K@60Hz 4:2:0, Slimport signal up to 4K@30Hz 4:4:4.
- Supports HDMI 1.4 standard and HDCP 2.2 compliant. Ensures display of content-protected media and interoperability with other HDCP compliant devices.
- Active input automatic detective.
- Extending HDMI signal 4K@60Hz up to 131ft/40m and 1080P@60Hz up to 229ft/70m.
- Supports RS232 pass-through with HDBaseT connection and local control.
- Supports IR pass-through to extend IR signal to control display device.
- The **DISPLAY ON/OFF** button can be programmed by IR learning feature or RS232 command.
- The HDBT port supports 12V-48V PoC input, the switcher can be powered from the compatible HDBaseT receiver by the CATx cable, and it also supports 12V-24V PoC output.
- Firmware upgrade by Micro-USB port.

## 1.2 Package List

- 1x PT-HDBT-703-TXWP-F
- 1x 2-pin Terminal Block
- 2x 3-pin Terminal Blocks
- 1x Power Adapter (24V 1.25A)
- 1x User Manual

**Note:** Please contact your distributor immediately if any damage or defect in the components is found.

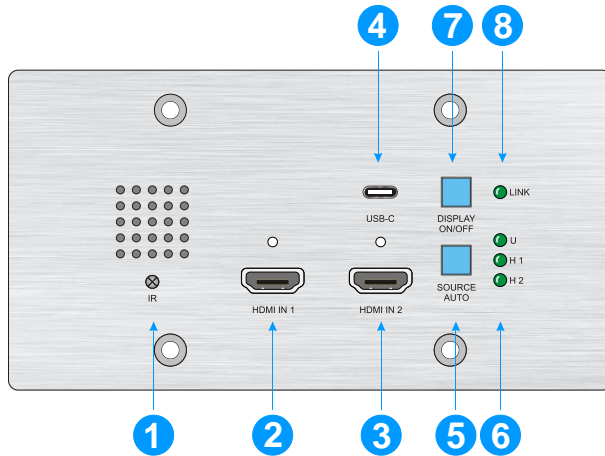
## 2. Specification

Input	
Input	(2) HDMI, (1) USB-C (Slimport)
Input Connector	(2) Female type A HDMI, (1) Type-C USB
HDMI Input Resolution	Up to 4K/UHD@60Hz 4:2:0
Slimport Input Resolution	Up to 4K/UHD@30Hz 4:4:4
Output	
Output	(1) HDBT OUT
Output Connector	(1) RJ45
HDBT Output Resolution	Up to 4K/UHD@60Hz 4:2:0
Control	
Control Ports	(1) IR, (1) FIRMWARE, (1) RS232, (1) IR IN
Control Connector	(1) Built-in IR sensor, (1) Micro-USB, (2) 3-pin terminal block
General	
Bandwidth	10.2Gbps
Transmission Mode	HDBaseT
HDMI Version	1.4
HDCP Version	2.2
Transmission Distance	4K@60Hz≤40M, 1080P@60Hz≤70M
External Power Supply	Input:100V~240V AC; Output: 24VDC 1.25A
Power Consumption	5W max. (Transmitter only – add extra for HDBaseT receiver)
Operation Temperature	-10 ~ +40 °C
Storage Temperature	-15 ~ +55 °C
Relative Humidity	10% ~ 90%
Dimension (W*H*D)	151mm x 80mm x 32.1mm
Net Weight	260g



## 3. Panel Description

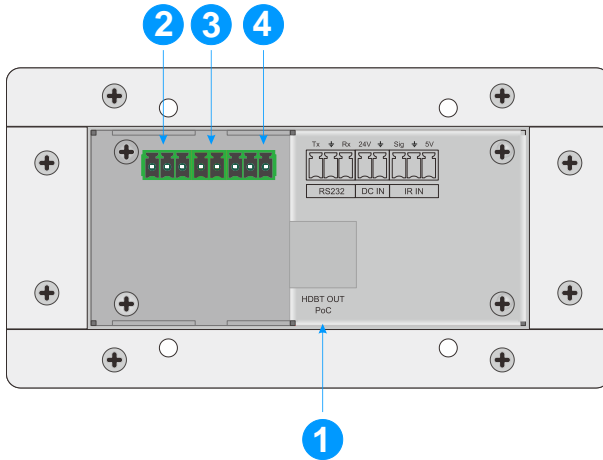
### 3.1 Front Panel



- ① **IR:** Built-in IR sensor for IR learning feature. It doesn't support IR pass-through.
- ② **HDMI IN 1:** Type-A HDMI port to connect HDMI source.
- ③ **HDMI IN 2:** Type-A HDMI port to connect HDMI source.
- ④ **USB-C:** Type-C USB to connect the Macbook or other device with SlimPort output.
- ⑤ **SOURCE AUTO:**
  - ✓ Press the backlit button to select the next input source.
  - ✓ Press and hold the button at least 3 seconds to enable auto switching mode. For more details, please refer to the [5.1 Source Switching](#) on the page 8.
- ⑥ **Input LED:**
  - **U:** The LED illuminates green to indicate the USB-C input is selected.
  - **H 1:** The LED illuminates green to indicate the HDMI 1 input is selected.
  - **H 2:** The LED illuminates green to indicate the HDMI 2 input is selected.
- ⑦ **DISPLAY ON/OFF:** Turn the display ON or OFF via CEC or RS232 (Programming required). For more details, please refer to the [5.2 Display Control](#) on the page 9.

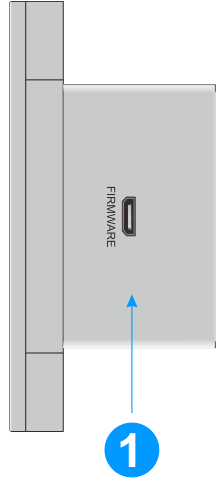
- ⑨ **LINK LED:** The LED illuminates green to indicate a successful data link with the HDBaseT receiver.

### 3.2 Rear Panel



- ① **HDBT (POC):** RJ45 HDBaseT output port to connect to the HDBT IN port of the receiver by a CATx cable. It supports 12V-48V PoC to enable the switcher can be powered from a compatible receiver.
- ② **RS232:** Either 3-pin terminal block to connect a control device (such as PC) to send the RS232 command to control this unit, or to connect a third party device which needs to be controlled by RS232 pass-through. For more details, please refer to the [6. RS232 Control](#) on the page 10.
- ③ **DC IN:** Power port to connect 24V DC power adapter.
- ④ **IR IN:** 3-pin terminal block to connect an IR receiver.

## 3.3 Side Panel



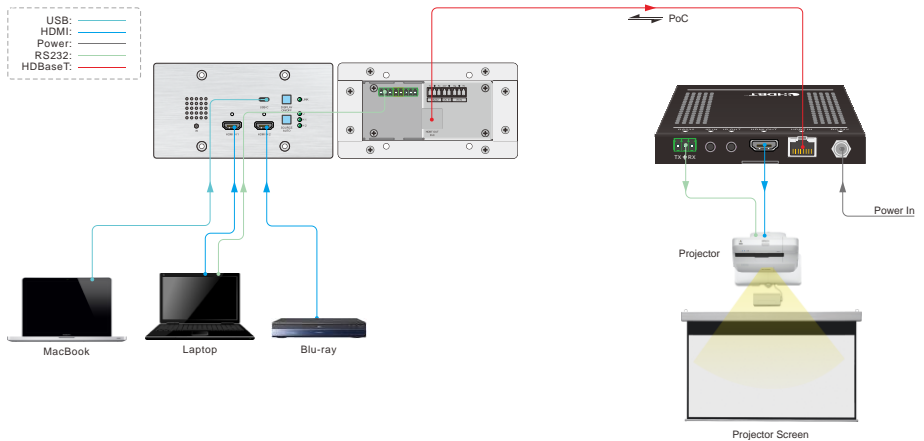
- ① **FIRMWARE:** Micro-USB port for firmware upgrade.

## 4. System Connection

### Usage Precautions

- Make sure all components and accessories included before installation.
- System should be installed in a clean environment with proper temperature and humidity.
- All of the power switches, plugs, sockets, and power cords should be insulated and safe.
- All devices should be connected before power on.

The following diagram illustrates typical input and output connection that can be utilized with the switcher:



**Note:** We recommend CATx cabling with alien crosstalk prevention technology to ensure the performance of HDBaseT link. Transmitter

## 5. Button Control

### 5.1 Source Switching

- 1) Press the **SOURCE AUTO** button to switch to next source device, and then the corresponding input LED will turn green.
- 2) Press and hold the **SOURCE AUTO** button at least 3 seconds to enable auto switching mode, and it abides by the following principles:

- **New Input**

Once detecting a new input signal, the switcher will automatically switch to this new signal, and the far-end display device will receive command to be switched on. If source input is not detected, the far-end display device will automatically turn off within two minutes.

- **Source Removed**

When an active source is removed, the switcher will switch to the first available active input starting at HDMI IN 1.

- **Reboot**

The switcher can save the last configuration before losing power. If the last switching mode is auto switching, the switcher will automatically enter auto switching mode once rebooted, then detect all inputs and memorize their connection status for future rebooting using. If the last selected input source is still available, the switcher will switch to this input. If not, it will switch to the first available active input source starting at **HDMI IN 1**.

- **Exit auto switching mode**

Press and hold the **SOURCE (AUTO)** button for 3 seconds again to exit the auto mode, and the input source will not be changed.

## 5.2 Display Control

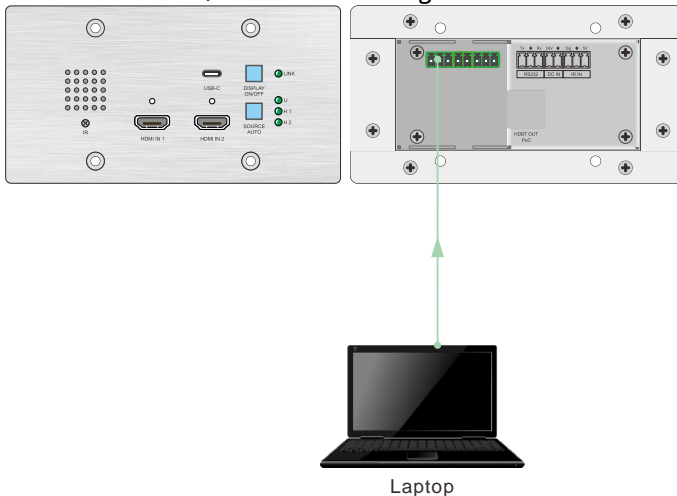
- 1) Press the **DISPLAY ON/OFF** button to turn on/off the display.
- 2) If the incompatible display device needs to be used with this switcher, the **DISPLAY ON/OFF** button can be programmed by IR learning or RS232 command. For more details, please refer to the **7 Button User-defined** on the page 16.

## 6. RS232 Control

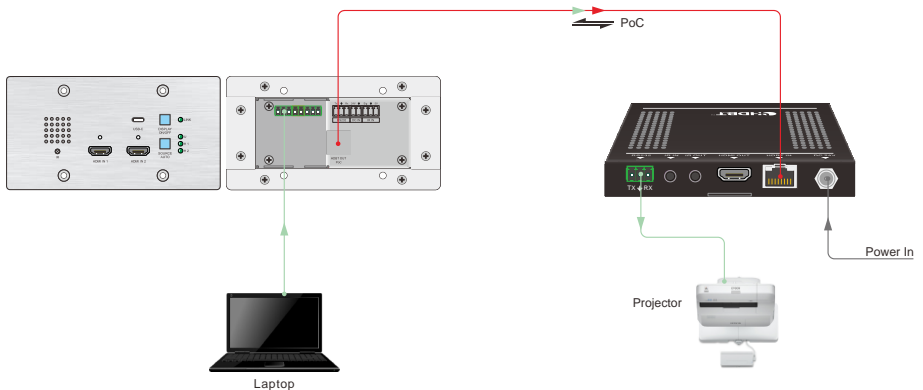
### 6.1 RS232 Connection

According the RS232 control mode, there are two types of RS232 connection can be selected.

- ① When only control the local switcher, connect a control device (e.g. PC) to the RS232 port of the switcher, the connection diagram shown as below:



- ② When control the far-end third party device from local control device (e.g. PC), connect the PC to the RS232 port of the switcher, and then connect the third party device (e.g. projector) to the RS232 port of receiver. The connection diagram shown as below:



## 6.2 RS232 Control Software

Here take the software **docklight** as an example.

- **Installation**

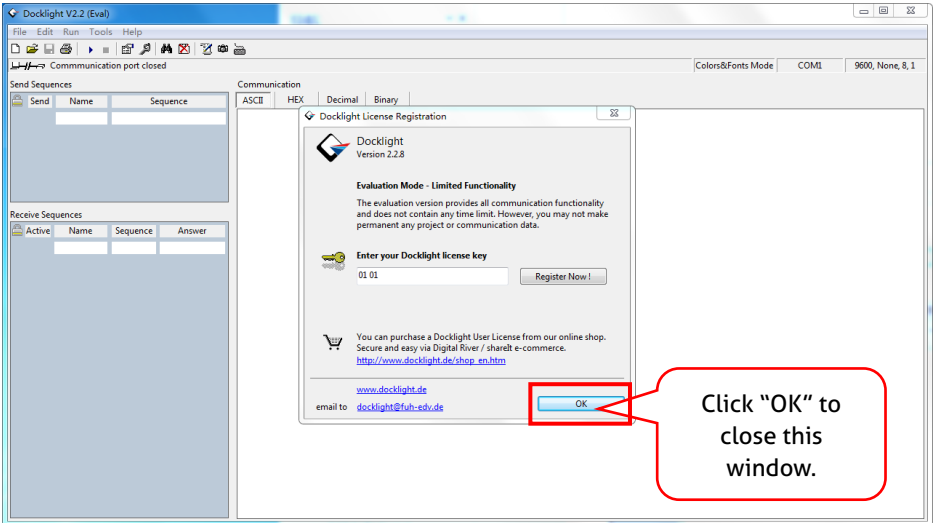
Please download the latest Software Version from the link below:

<https://docklight.de/download/Docklight.zip>

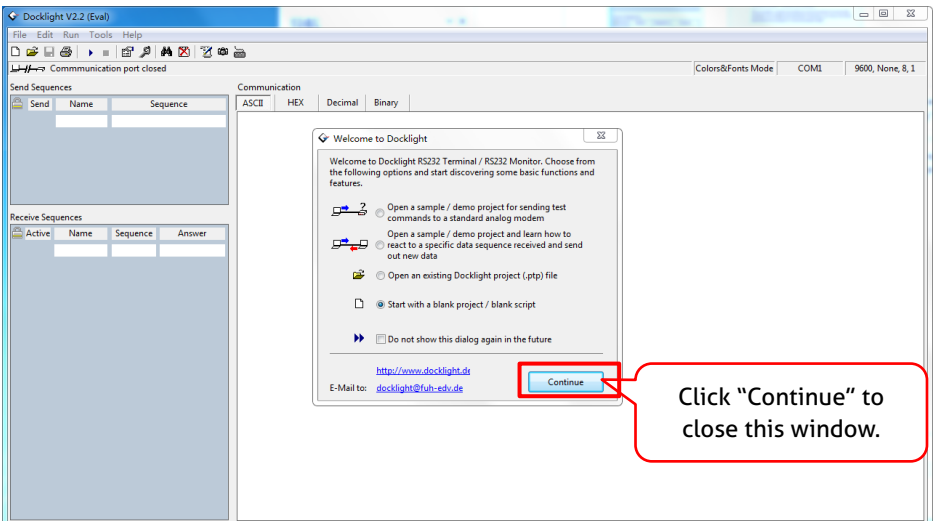
Then follow the installation wizard for installation on Windows 7 and 10.

After the installation, Docklight can be run for the first time and should look like the below screen shot:

Registration is not necessary unless you wish to save settings on exit, so unless you wish to register click on "OK" to close the window.

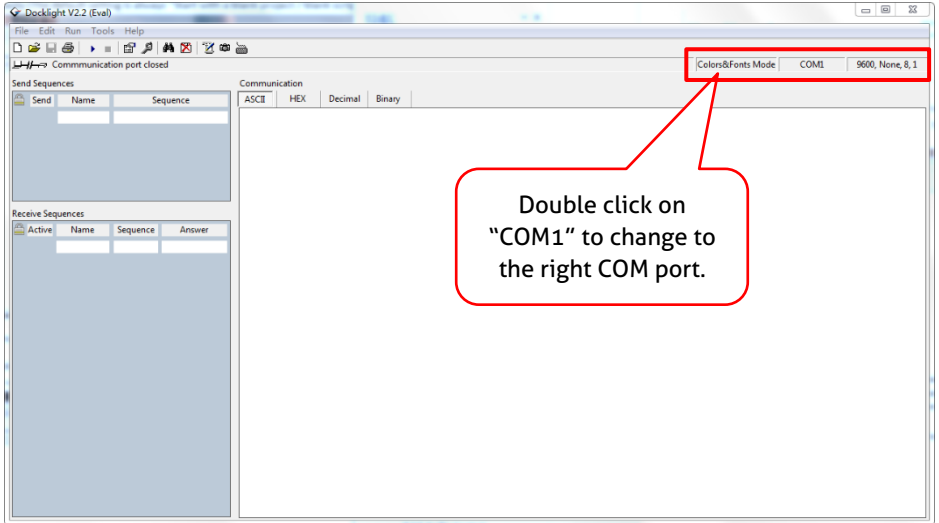


The next pop-up window can also be closed with "Continue". An empty project is enough to send and receive commands easily (The default setting is always "Start with a blank project / blank script ")



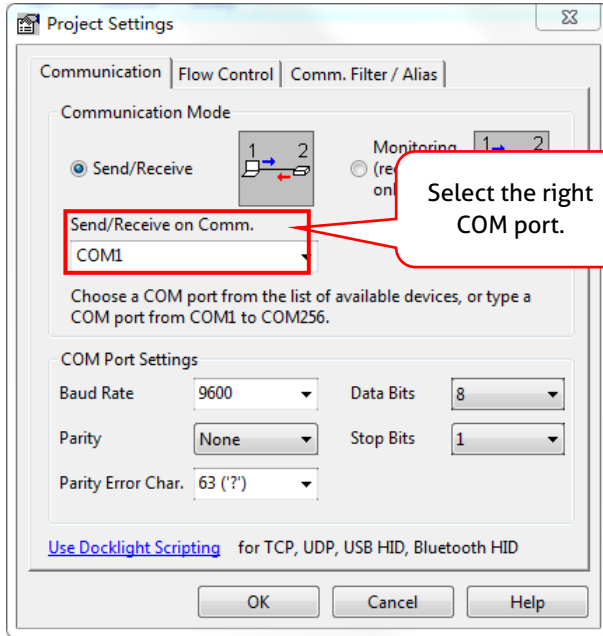


Now you are in the main view, where commands are sent and feedback is received. The next step is to select the correct COM port of the PC. To do this, double-click on "COM1" in the corresponding setup window.



In the following window, select the drop-down menu labeled "Send / Receive on Comm Channel", select the appropriate COM port and then click on "OK" at the bottom right corner.

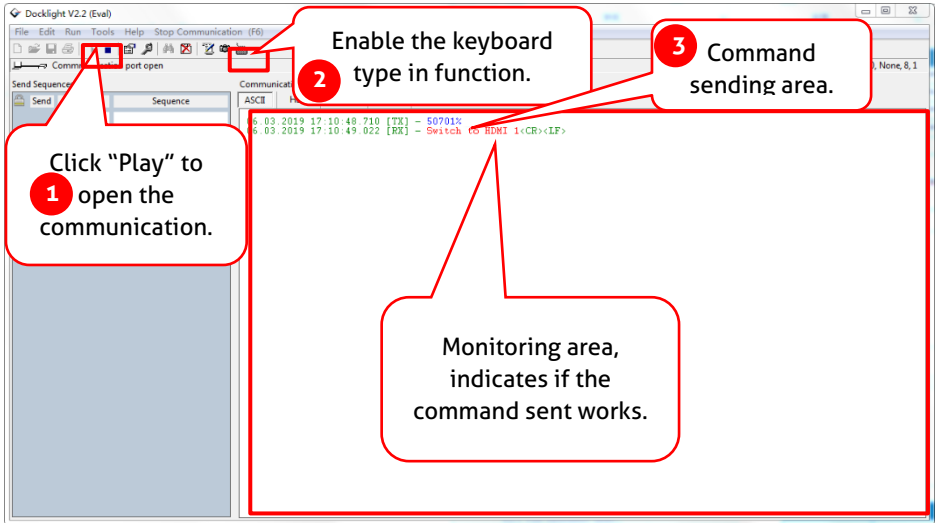
All other settings can be left at default for most applications, but refer to device RS232 settings to be sure.



In order to be able to send commands, open communication with the device by clicking on "Play". **(1)**

Then the keyboard function must be activated, so that commands can be written in the "communication window". **(2)**

Finally enter the command, for example "50701%". This is then confirmed by pressing "Enter" to send. Any response from the connected device will appear in red. **(3)**



## 6.3 RS232 Command

**Communication protocol:** RS232 Communication Protocol

**Baud rate:** 9600

**Data bit:** 8

**Stop bit:** 1

**Parity bit:** none

### 6.3.1 Device Control

Command	Function	Feedback Example
50617%	Restore factory default	FACTORY RESET
50699%	Get firmware version	VERSION Vx.x.x
50740%	Disable <b>DISPLAY ON/OFF</b> button.	DISABLE DISPLAY ON/OFF KEY
50741%	Enable <b>DISPLAY ON/OFF</b> button.	ENABLE DISPLAY ON/OFF KEY

### 6.3.2 Source Switching

Command	Function	Feedback Example
50701%	Switch to HDMI 1.	SWITCH TO HDMI1
50702%	Switch to HDMI 2.	SWITCH TO HDMI2
50704%	Switch to USB-C.	SWITCH TO USB-C
50710%	Enable auto switching mode.	AUTO SWITCHING
50711%	Enable manual switching mode.	MANUAL SWITCHING
50712%	Get the Source Switching mode.	AUTO SWITCHING
		MANUAL SWITCHING

### 6.3.3 EDID Management

The input resolution (EDID setting) can be set using RS232 commands to one of the options given in the following table.

Command	EDID	Feedback Example
50768%	720P PCM 2CH	EDID:720P, PCM 2CH
50769%	720P Dolby/DTS PCM 6CH	EDID:720P, DOLBY/DTS PCM 6CH
50770%	1080P PCM 2CH	EDID:1080P,PCM 2CH
50771%	1080P Dolby/DTS PCM 6CH	EDID:1080P, DOLBY/DTS 6CH
50772%	4K@30Hz PCM 2CH	EDID:4K30, PCM 2CH
50773%	4K@30Hz Dolby/DTS 5.1	EDID:4K30, DOLBY/DTS 5.1
50774%	1280x720@60Hz DVI	EDID:1280x720@60, DVI
50775%	1920x1080@60Hz DVI	EDID:1920x1080@60, DVI
50776%	1920x1200 PCM 2CH 6CH	EDID:1920x1200, PCM 2CH 6CH
50777%	3840x2160@60Hz 4:2:0 8 bit	EDID:3840x2160@60, 4:2:0 8BIT
50782%	Enable EDID user-defined mode. Uploading the user-defined EDID file by Micro-USB port within 10 seconds.	EDID: USER
50783%	EDID bypass	EDID: BYPASS
50784%	Get the current EDID.	EDID:720P, PCM 2CH
		EDID:720P, DOLBY/DTS PCM 6CH
		EDID:1080P,PCM 2CH
		EDID:1080P, DOLBY/DTS 6CH
		EDID:4K30, PCM 2CH
		EDID:4K30, DOLBY/DTS 5.1
		EDID:1280x720@60, DVI
		EDID:1920x1080@60, DVI

Command	EDID	Feedback Example
		EDID:1920x1200, PCM 2CH 6CH
		EDID:3840x2160@60, 4:2:0 8BIT
		EDID: USER
		EDID: BYPASS

### 6.3.4 CEC Control

The switcher also supports sending of a few common CEC commands using RS232 command code. Specific CEC command can also be sent from the switcher. The RS232 commands are as given in the following table. Please note that only CEC enabled devices that have the specified logical address will respond to CEC commands.

Command	Function	Feedback Example
50730%	Volume up.	CEC VOLUME INCREASE
50731%	Volume down.	CEC VOLUME DECREASE
50732%	Volume mute toggle.	CEC VOLUME MUTE
50733%	Display on.	CEC DISPLAY ON
50734%	Display off.	CEC DISPLAY OFF
CEC <xx:xx:xx....>	Send CEC command "xx:xx:xx..." to control display device.	CEC <xx:xx:xx...>

## 7. Button User-defined

Press the **DISPLAY ON/OFF** button can turn on/off the display. If the incompatible display device needs to be used, the **DISPLAY ON/OFF** button can be programmed by IR learning feature or RS232 command.

- **IR learning feature:**

Please according the below IR learning steps to defined the **DISPLAY ON/OFF** button.

- 1) Press and hold both the **DISPLAY ON/OFF** and **SOURCE AUTO** button until the both the button LEDs flash alternately.
- 2) Use the **DISPLAY ON/OFF** button to choose the command be set:
  - ✓ Rapid flashing indicates that **DISPLAY ON** mode is selected.
  - ✓ Slow flashing indicates that **DISPLAY OFF** mode is selected.
- 3) Point the IR remote at the IR sensor and press the respective button on the IR remote.
- 4) The **DISPLAY ON/OFF** button LED will stop flashing and remain lit to indicate that IR command has been learnt.
- 5) Press and hold the **SOURCE AUTO** button until the both the button LEDs go out to exit the IR learning mode. The switcher will enter auto switching mode five seconds later.

**Note:** *The IR learning function will self-terminate after 30 seconds of inactivity.*

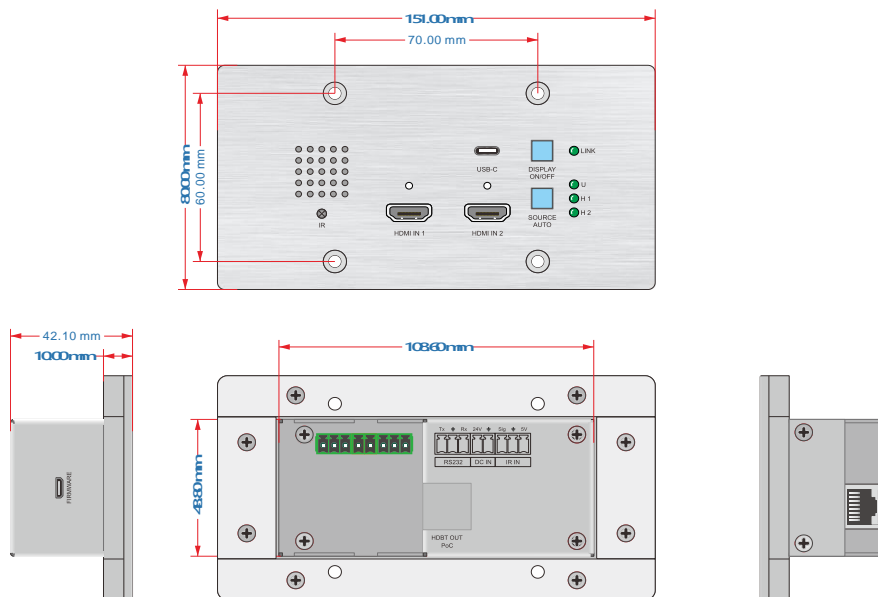
- **Programed by RS232 command:**

The **DISPLAY ON/OFF** button also can be defined to send control characters by following the below command format.

Command Format	Function	Command Example
/+kb:xxxx	k=0, Set the <b>DISPLAY ON</b> k=1, Set the <b>DISPLAY OFF</b> xxxx: ASCII characters b=0, Baud rate is 2400 b=1, Baud rate is 4800 b=2, Baud rate is 9600 b=3, Baud rate is 19200 b=4, Baud rate is 38400 b=5, Baud rate is 57600 b=6, Baud rate is 115200	/+02:abc123
		Set the <b>DISPLAY ON</b> to send the ASCII characters <b>abc123</b> .
/-kb:xx xx xx xx	k=0, Set the <b>DISPLAY ON</b> k=1, Set the <b>DISPLAY OFF</b> xx xx xx xx: HEX characters b=0, Baud rate is 2400 b=1, Baud rate is 4800 b=2, Baud rate is 9600 b=3, Baud rate is 19200 b=4, Baud rate is 38400 b=5, Baud rate is 57600 b=6, Baud rate is 115200	/-12:30 31 32 33
		Set the <b>DISPLAY OFF</b> to send the HEX characters <b>30 31 32 33</b> .
/x0:xxx	Set the booking shutdown time to <b>xxx</b> .	SET TIME TO xxx MINUTES TO TURN OFF THE DISPLAY IF NO SOURCE DETECTED



## 8. Panel Drawing



## 9. Troubleshooting & Maintenance

Problems	Potential Causes	Solutions
Color losing or no video signal output in HDMI display.	The connecting cables may not be connected correctly or it may be broken.	Check whether the cables are connected correctly and in working condition.
No HDMI signal output in the device while local HDMI input is in normal working state.		
Output image with white noise.		
<b>POWER</b> indicator doesn't work or no respond to any operation.	Loose or failed power cord connection.	Ensure the power cord connection is good.

***Note:** If your problem still remaining after following the above troubleshooting steps, please contact your local dealer or distributor for further assistance.*

## 10. After-Sales Service

If there appear some problems when running the product, please check and deal with the problems referring to this user manual. Any transport costs are borne by the users during the warranty.

**1) Product Limited Warranty:** This product will be free from defects in materials and workmanship for **two years** (The purchase invoice shall prevail).

Proof of purchase in the form of a bill of sale or receipted invoice which is evidence that the unit is within the Warranty period must be presented to obtain warranty service.

**2) What the warranty does not cover (servicing available for a fee):**

- Warranty expiration.
- Factory applied serial number has been altered or removed from the product.
- Damage, deterioration or malfunction caused by:
  - Normal wear and tear.
  - Use of supplies or parts not meeting our specifications.
  - No certificate or invoice as the proof of warranty.
  - The product model showed on the warranty card does not match with the model of the product for repairing or had been altered.
  - Damage caused by force majeure.
  - Servicing not authorized by distributor.
  - Any other causes which does not relate to a product defect.
- Delivery, installation or labor charges for installation or setup of the product.

**3) Technical Support:** For any questions or problems, contact your distributor or reseller and tell them the respective product name and version, the detailed failure situation as well as the formation of the cases.

## Asking for Assistance

**Technical Support:**

Phone: +49 5971 800299 - 0

Fax: +49 5971 800299 - 99

**Technical Support Hours:**

8:30 AM to 5:00 PM Monday thru Thursday

8:30 AM to 4:00 PM Friday

**Write to:**

PureLink GmbH

Von-Liebig-Straße 10

D - 48432 Rheine

[www.purelink.de](http://www.purelink.de)

[info@purelink.de](mailto:info@purelink.de)

---