

CMS21

ADJUSTABLE CEILING MOUNT

FOR 40"-75" SCREENS

The CMS21 robust monitor or TV mount is a solution for those who value aesthetics and precision of design. Equipped with a system that protects the screen against falling, it works perfectly in hotels, restaurants or public buildings. CMS21 features a slim structure and simple design. Stepwise height adjustment ensures accurate fastening, and the integrated cable management system allows the cabling to be hidden, guaranteeing aesthetic appearance of any audiovisual installation.

FEATURES

- Height adjustment
- Adjustment of the angle of rotation, tilt
- Simple screen installation
- Simple and quick installation
- Smart cable management
- Includes all necessary screen mounting hardware
- Modern design with high-end finish

PRODUCT SPECIFICATIONS

Short index	CMS21
Category	Ceiling Mounts
Product group	Display Mounts
Colour	Black
Warranty	Limited 5-years
Number of screens	1
Minimum screen size	40"
Maximum screen size	75"
Maximum load	60 kg
Forward tilting	-6°/+12°
Height adjustment	Yes
VESA Mounting Compatibility	100x100 up to 600x400



40"-75"



100x100
600x400



-6°/+12°



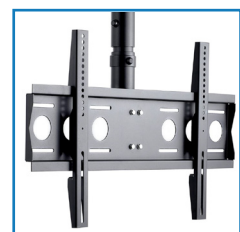
60 kg



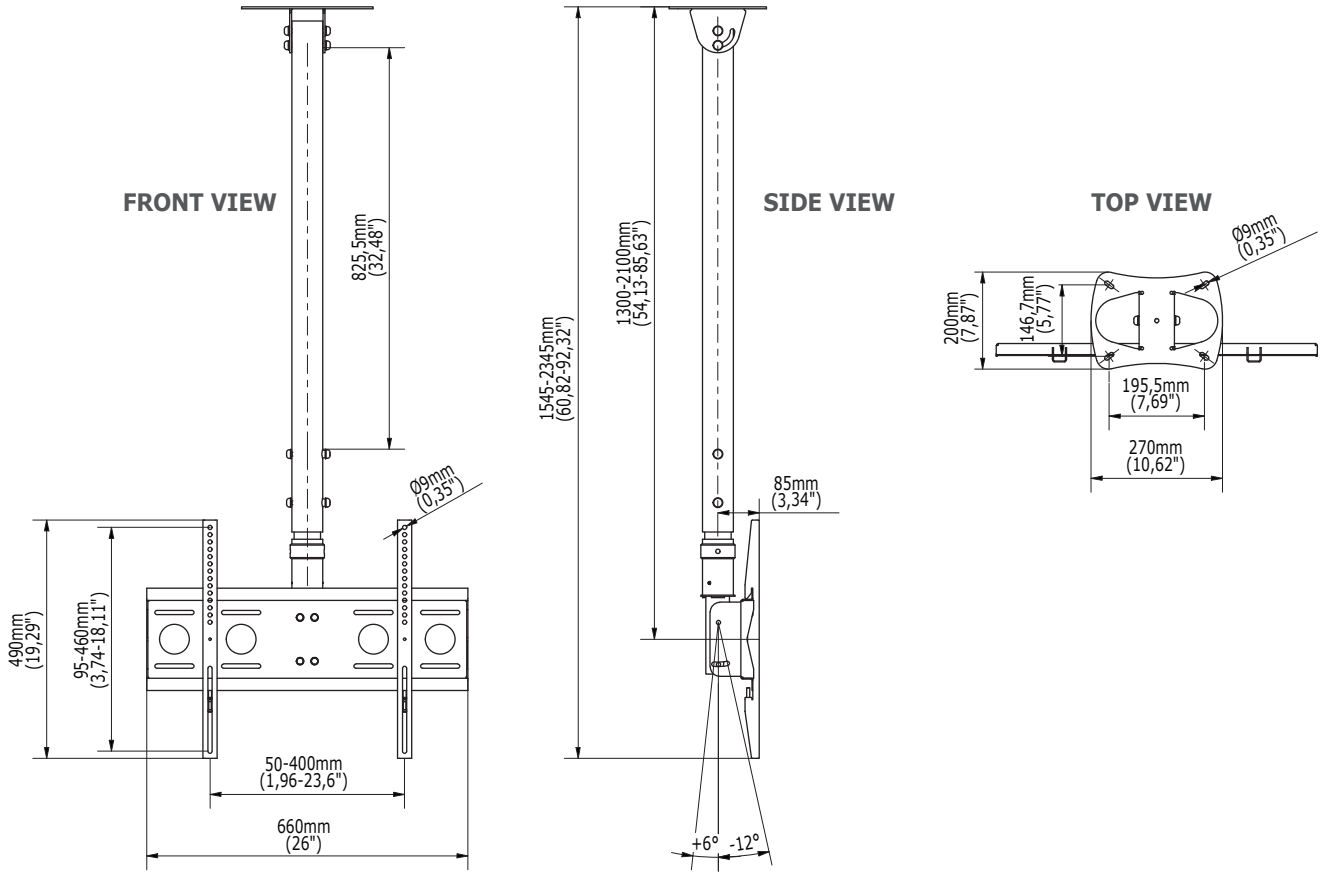
Height adjustment



Tilt adjustment and rotation



Universal mounting bracket


TECHNICAL SPECIFICATIONS

Product dimensions	W: 660 mm D: 200 mm H: 1545 mm (W:26" D:7.87" H:60.83")
Product weight	18,5 kg (41 lb)
Max. distance from mounting surface	2100 mm (82,68")
Min. distance from mounting surface	1300 mm (51,18")
Max. mounting pattern	620 mm x 460 mm
Min. mounting pattern	50 mm x 95 mm

LOGISTICS DATA

SAP INDEX	EAN CODE	COLOUR	PACKAGE DIMENSIONS	PACKAGE WEIGHT
WUSU-CMS21	5908252968411	BLACK	1310 x 315 x 170 mm 51,57 x 12,40 x 6,69"	19,5 kg 43 lb

HS Code (Harmonized System): 732690, HTS Code (Harmonized Tariff Schedule): 7326909890, Country of Origin: Poland

ACCESSORIES AND RELATED PRODUCTS


CMARM60



SV34



SV35



MSA01

2021 - EDBAK Sp. z o.o. All rights reserved.
The information included in the specifications reflects the current technical specifications at the time of printing. We reserve the right to modify technical or physical specifications without prior notice. EDBAK name and EDBAK logo are registered trademarks of EDBAK Sp. z o.o. All EDBAK images and symbols are sole property of EDBAK Sp. z o.o. Edbak shall not be held liable for any loss or damage caused by incorrect installation or mounting. Copying this specification in whole or in part is only allowed after obtaining written consent from EDBAK Sp. z o.o.
CMS21-210601-EN